

---

**Board of Trustees  
Student Representative  
2012-2013 Manual**

---



# Table of Contents

<b>Section 1</b>	<b>The Board</b> Introduction Philosophy Mission Board Members Systems Reports
<b>Section 2</b>	<b>History</b> Student Trustee History Student Trustees ICC Historical Happenings
<b>Section 3</b>	<b>Facts and Figures</b> Budget/Financial Data Educational Foundation Community Colleges Facts About Illinois Central College Facts About Community Colleges College Programs/Classes Enrollment Trends Student Profile
<b>Section 4</b>	<b>Role and Responsibilities</b> Election Process and Seating Representing the Students Code of Conduct Vacancy Board Meeting Attendance Board Meetings/Packets State Involvement Student Trustee Travel
<b>Section 5</b>	<b>Appendix</b> Sample Board Meeting Agenda Organizational Chart The ICC Essentials – Fall 2011 Maps: Community Colleges, Districts, #514 District Community College Contact Information Illinois State Senators/Representatives Contact Information Acronyms / Websites

## The Board



---

## Introduction

This manual provides general information about Illinois Central College as well as an overview of the role of the Student Trustee. This guide serves to acclimate the student to their elected position.

---

## Philosophy

*ICC's purpose is to enable students to reach their educational potential, and to serve as a resource for the educational and cultural needs of the community.*

Founded as a comprehensive community college in 1966 in response to the Illinois Master Plan for Higher Education, Illinois Central College was established to meet the post-secondary needs of the citizens of the District and to supplement the area schools and four-year colleges.

The College was formed on the belief that individuals have worth and dignity in their own right and should be educated to the fullest extent of their abilities and motivation. Education of each citizen creates a better community for all. The College strives to provide quality education appropriate to each individual's needs within the bounds of fiscal responsibility. Illinois Central College is committed to non-discrimination and equal opportunity regardless of race, gender, ethnicity, religion, or physical capability. We believe that by representing the diversity of our district, we enrich the learning experience and create a broader and better understanding of our global community. In support of building and learning environment, we are dedicated to being a leader in recruiting, retaining, and promoting a diverse group of students, faculty, and staff.

The student is the center of all that is done at Illinois Central College. The College strives to provide students the knowledge, skills, and understanding for successful and satisfying careers and for intelligent participation in and preservation of a free and democratic society. This includes the development of a higher sense of values and the desire for continuous education throughout life. To achieve these purposes, the College encourages excellence in teaching and close communication between instructor and student.

The College is also committed to its Core Values: Learning, Integrity, Responsibility, Community, and Excellence.

*Adopted: Board of Trustees 1/14/93  
Reaffirmed Annually  
Last Date of Reaffirmation 2/24/12*

---

## Mission

The mission of the College is to (1) enable students to reach their educational potential and (2) serve as a resource for the educational and cultural needs of the community.

To fulfill its philosophy and mission, the College:

1. Promotes student access through both admission policies and reasonable student costs that encourage enrollment of those who can benefit from the instruction and services offered.
2. Enhances the academic and personal development of all students through a full range of support services.
3. Provides a broad general education curriculum for students in all programs as a basis for further study and specialization.
4. Offers the requirements and prerequisites in preparation for successful transfer to a four-year institution to complete a baccalaureate degree.
5. Provides a variety of occupational and technical programs that prepare students for successful employment and that meet the needs of area business and industry.
6. Provides developmental and remedial level studies for students with academic deficiencies.
7. Provides opportunities for students to appreciate and benefit from the diversity of people in a global community.
8. Offers continuing education opportunities for students interested in meeting personal goals of updating employment skills and pursuing cultural and leisure interests.
9. Cooperates with other educational, business, and governmental entities to address educational needs related to the economic health of the residents of the District.
10. Provides special cultural, recreational, and general interest events, which enrich the life of the community.

*Through learning,  
minds change. We  
believe by changing  
minds, we can change  
the world.*

*Adopted: Board of  
Trustees  
3/27/08*

*Adopted: Board of Trustees 1/14/93  
Reaffirmed Annually  
Last Date of reaffirmation 2/24/12*

---

## Board Members

		<i>Term Expires</i>
Don Brennan	Peoria	2017
Katherine Coyle	Peoria	2015
Robert R. Ehrich	Pekin	2013
Timothy Elder	Dunlap	2015
David J. LaHood	East Peoria	2013
James K. Polk	Peoria	2017
Sue Yoder	East Peoria	2017
Trevor Mileur, Student Trustee		4/15/13

---

## Systems Reports

**Teaching/Learning** – David LaHood / Dr. William Tammone / Dr. Margaret Swanson report on initiatives and directions of programs and curriculum

**Student Life** – The Student Trustee reports to the Board on upcoming and past events and activities.

**Student Services** – David LaHood / Guy Goodman report on issues and policies relative to Student Services and community events.

**Finance** – Katherine Coyle / Bruce Budde report on current issues related to purchasing and financing.

**Human Resources** – Dr. Robert Ehrich / Patrick Parsons report to the Board regarding recommendations on behalf of the administration related to employment issues of faculty and staff.

**Marketing and Diversity** – Don Brennan / Dr. Cheryl Fliege/ Dr. Rita Ali review and recommend planning, organizational effectiveness, marketing, and diversity relative to the strategic plan.

**Facilities and Technology** – James Polk / Sue Yoder / Bruce Budde report on new construction and renovations to ICC facilities and grounds and technology updates.

**Committee of the Whole** – Tim Elder, Board Chair

*Each Board Member is assigned to a system with an administrative chair.*

## History



---

## Student Trustee History

*ICC truly values the perspective of the student body.*

The Student Trustee position was established in October 1974 through an amendment to the Public Community College Act. Each community college should have one student member under the jurisdiction of the Board. They are elected by a campus-wide referendum for a one-year term beginning April 15 and ending April 14 the following year. The Student Trustee membership privileges include the right to make and second motions and attend closed session.

In November 1994, the ICC Student Trustee was granted an advisory, non-binding vote on all voting issues by the Board of Trustees.

Illinois Central College truly values the perspective of the student body. The Student Trustee has been invaluable to the Board as a reflection of the students' position on institutional issues.

---

## Student Trustees

Joan Besing	1974	Jeffery Williams	1994
Julia Schmidt	1975	Jennifer McCabe	1995
Lynn Travis	1976	Brenden Witte	1996
Jim Williams	1977	Laura Hagaman	1997
Colleen Eaton	1977	Philomena Clement	1998
Laura Schroeder	1978	Andel Jowers	1998
Francis Baker	1979	Derek Hilst	1999
Bruce Theobald	1980	Dan Hibbs	2000
Bill Christ	1980	Julia Myers	2001
Don Ford	1981	Leah Leas	2001
Wayne Leuthold	1982	Jeffery Williams	2002
Tim Gallagher	1982	Kevin Parker	2003
Phil Harris	1983	Michael Lang	2004
Tim Gallagher	1984	Wade Dooley	2005
Kit Mernich	1985	Roy Beckham	2006
Keri Fuller	1986	Jaime Casinova	2007
Nikki Mitts	1987	Spanky Edwards	2008
Ann Hartman	1988	Jarek Palmer	2008
Laura Sweeney	1989	Thomas Aguilar	2009
Tobin Taylor	1990	George Azouri	2010
Bryan Miller	1991	DeVon Deckert	2011
Erin Powers	1992	Trevor Mileur	2012
Rebecca Wegner	1993		

## ICC Historical Happenings

<b>Date</b>	<b>Event</b>	<b>Tuition</b>	<b>Budget</b>
<b>May 1966</b>	Referendum Establishing Public Junior College District #514 Passes		
<b>September 1967</b>	College Opens on Interim Campus	\$5	\$3.7 Million
<b>March 1968</b>	\$9.7 Million Bond Referendum Approved		
<b>June 1969</b>	First Commencement- 103 Graduates		
<b>May 1970</b>	Groundbreaking for Phase I of Permanent Campus		
<b>September 1970</b>	First Telephone Registration	\$7	\$5.5 Million
<b>Spring 1971</b>	First Off-Campus Classes Offered		
<b>February 1972</b>	College Granted Full Accreditation by North Central		
<b>Spring 1972</b>	Completion of Phase I, First Fine Arts Festival		
<b>January 1973</b>	Peoria Downtown Center Opens		
<b>March 1973</b>	Board Approves Intercollegiate Athletics		
<b>Fall 1973</b>			\$7.7 Million
<b>1974</b>	Completion of Phase II, Library/Administration Building & Gymnasium		
<b>Fall 1975</b>	First College Night, First Career Day		
<b>December 1975</b>	First President, Dr. Kenneth L. Edwards Retires		
<b>January 1976</b>	Dr. Leon H. Perley, New President, Assumes Office		
<b>Fall 1976</b>		\$12	\$10.4 Million
<b>1977</b>	Agricultural/Industrial Technologies Building & Performing Arts Center Completed		
<b>November 1979</b>	Peoria Downtown Center Occupies new Facilities		\$12.9 Million
<b>Fall 1980</b>	Off-Campus Classes Offered at over 50 Locations		
<b>Fall 1981</b>	Enrollment Exceeds 15,000 For First Time		\$16 Million
<b>Summer 1982</b>		\$16	
<b>Fall 1983</b>	First Founders Day		

<b>Date</b>	<b>Event</b>	<b>Tuition</b>	<b>Budget</b>
<b>Summer 1984</b>	Bids Let for New High-Tech Addition	\$20	
<b>December 1984</b>	First Winter Commencement 400 Graduates		
<b>August 1985</b>	New Downtown Peoria Location Opens 115 SW Adams Street		
<b>October 1985</b>	High-Tech Addition to Agricultural/Industrial Technologies Building Opens		
<b>October 1985</b>	Founder's Day 20 <sup>th</sup> Anniversary	\$24	
<b>1987</b>	Weekend College Begins		
<b>1988</b>	Educational Foundation Established	\$28	
<b>December 1988</b>	Dr. Leon H. Perley Retires		
<b>January 1989</b>	Dr. Thomas K. Thomas, 3 <sup>rd</sup> President, Assumes Office		
<b>1990</b>	Perley Peoria Campus Remodeling Project Completed Fitness Center Opens		
<b>Fall 1991</b>		\$32	\$23.5 Million
<b>Summer 1992</b>		\$36	
<b>Summer 1993</b>		\$40	
<b>Summer 1994</b>	Student Services Area Remodeled New Entrance to Main Campus		
<b>January 1995</b>	Health and Public Services Building Peoria Campus Opens		
<b>Fall 1996</b>	12,115 Students Enrolled	\$42	
<b>September 1997</b>	30 <sup>th</sup> Anniversary Celebration		
<b>August 1999</b>	Dedication of Caterpillar Dealer Service Technician Training Building on EP Campus		
<b>October 1999</b>	Unveiling of "Tribute" Sculpture on Library/Admin. Building		
<b>Fall 2000</b>	11,740 Students Enrolled	\$45	\$35.6 Million
<b>December 2000</b>	Dr. Thomas K. Thomas Retires		
<b>January 2001</b>	Dr. John S. Erwin, 4 <sup>th</sup> President, Assumes Office		
<b>Fall 2001</b>	11,764 Students Enrolled	\$50	
<b>October 24, 2001</b>	Groundbreaking for New AIT Addition/Renovations		

<b>Date</b>	<b>Event</b>	<b>Tuition</b>	<b>Budget</b>
<b>Fall 2002</b>	Groundbreaking for New Tech Center Addition	\$52	
<b>December 2002</b>	First classes held at ICC North Minimesters for 100 students		
<b>Fall 2003</b>	12,302 Students Enrolled ICC North Holds Classes	\$56	
<b>October 22, 2003</b>	AIT Open House New Addition		
<b>April 20, 2004</b>	Dedication of New Tech Center		
<b>Fall 2004</b>	12,046 Students Enrolled Campus Student Residences Available Groundbreaking for New Career Center	\$60	
<b>Fall 2005</b>	12,402 Students Enrolled October – ICC North Purchased	\$64	
<b>March 2006</b>	New Career Center Addition Opens		
<b>May 4, 2006</b>	Dedication of the David R. Leitch Career Center		
<b>Fall 2006</b>	12,145 Students Enrolled	\$70	
<b>Fall 2007</b>	ICC Celebrates 40 <sup>th</sup> Anniversary 11,804* Student Enrolled (*Courses no longer offered at State Correctional facilities.)	\$75	
<b>Fall 2008</b>	12,020 Students Enrolled	\$82	
<b>January 2009</b>	ICC South in Pekin Opens Classes begin		\$57.6 Million
<b>Summer 2009</b>	Groundbreaking for CougarPlex		
<b>Fall 2009</b>	13,049 Students Enrolled	\$87	
<b>Fall 2010</b>	13,078 Students Enrolled	\$93	
<b>Fall 2011</b>	12,286 Students Enrolled	\$102	\$66.8 Million
<b>Fall 2012</b>		\$106.50	

## Facts and Figures



---

## Budget/Financial Data

Operating Budget	\$66,851,292 (FY 12)
Campus	498 Acres
Facilities (approx.)	1.1 Million Square Feet

---

## Educational Foundation

The Illinois Central College Educational Foundation, a non-profit tax-exempt organization founded in 1988, was established to secure additional funds for the College. Contributions to the Foundation allow education to (1) be accessible to more students; (2) enable the College to offer more programs; and (3) enhance what is already an outstanding institution of higher education.

---

## Community Colleges

Illinois boasts one of the finest community college systems in the United States. Although the first public community college in the world was established in Joliet in 1901, the state's community college did not formally become part of the Illinois higher education system until passage of the Illinois Public Junior College Act in 1965. In 1973, the term "junior" was changed to "community" in statute. Currently there are 48 colleges and one multi-community college center within 39 community college districts serving almost 1 million students each year. The community college system has brought higher education within driving distance of every Illinois citizen.

These colleges serve a diverse student population. Approximately 33% are minorities comprising nearly two-thirds of all minorities in public higher education. Nearly 12,000 persons with disabilities enroll in community colleges and 62,000 students with limited English proficiency are served annually. The average age of a community college student is 31. Seventy-five percent of community college students attend part time, with many working while attending college.

---

## Facts About Illinois Central College

ICC serves the residents of all or parts of ten counties in Central Illinois: Peoria, Tazewell, Woodford, Bureau, Logan, Marshall, Livingston, McLean, Stark and Mason. Compared to other Illinois community college districts, ICC is the

7<sup>th</sup> largest in district size (2,322 square miles)

14<sup>th</sup> highest in assessed valuation (\$6.16 billion)

12<sup>th</sup> highest in operating tax rate (per \$100 of assessed value)

9<sup>th</sup> highest fall headcount (12,020 Fall 2008 credit only)

Illinois Central College is accredited by the Higher Learning Commission of the North Central Association of Colleges and Schools located at 30 North LaSalle, Suite 2400, Chicago, Illinois 60602-2504 (312/263-0485). Approximately 1,263 full time and part time personnel serve the students each semester.

---

## Facts About Community Colleges

- The first community college in the nation was established in Illinois, Joliet Junior College, in 1901.
- Illinois is the 3rd largest community college system in the nation.
- Thirty-nine community college districts, which contain 48 community colleges statewide, serve the diverse needs of Illinois' adult population.
- The average community college full-time student pays only \$2,521 per year in tuition and fees.
- Community colleges offer training in over 300 different careers/occupations.
- Nearly seventy percent of the career and technical program graduates are employed in the community college district where they were educated and trained. They make positive contributions to the regional economy.
- A recent study by Northern Illinois University's Center for Governmental Studies entitled, The Economic Impact of Illinois Community Colleges, finds that more than 80 percent of Illinois employers have hired a community college student over the last ten years and that nearly 30% of Illinois employees have completed a credit course at a community college in that same time period.

---

## Facts About Community Colleges

- Taking courses at an Illinois community college pays off in the students' work lives. On average, all students who complete their Illinois community college education experience a double-digit percentage increase in earnings over their pre-enrollment wages. According to the study, Illinois community college graduates employed full-time averaged more than \$30,000 statewide in annual earnings after graduating.
  - Community colleges helped to create and retain over 17,000 Illinois jobs in Fiscal Year 2009.
  - Of all postsecondary sectors, community colleges enroll by far the highest proportion of low income youth, particularly from urban centers; the highest proportion of legal immigrants seeking to develop their skills and expand their opportunities; and the highest proportion of minority groups who are under represented both at middle- and upper-income levels and in good jobs with career opportunities. Heading off the spread of poverty among these groups and reversing the growing disparity of wealth and income are among the most important tasks facing our nation. Community colleges are one of the keys to meeting these challenges.
  - Community colleges are taking on the huge task of "reskilling" America's work force by helping literally millions of working adults develop higher levels of basic and technical skills. Success in this unprecedented challenge is essential if America's workers are to earn good wages and if their employers are to compete in demanding world markets.
  - Each fall, Illinois community colleges account for nearly two-thirds (63.9%) of all students enrolled in Illinois public higher education. Community colleges are the primary provider of the higher education experience in Illinois.
  - In 2009, nearly 35,000 college and university graduates returned to Illinois community colleges for additional education and training. Illinois community colleges educate, train, and enhance the lives of almost one million students each year.
  - One out of every 18 Illinois citizens attends an Illinois community college. Community college students average 31 years of age.
  - More than two-thirds of all minorities in public higher education attend community colleges, and nearly 12,000 students with disabilities and 62,000 students with limited English proficiency are served annually.
  - The Illinois community college system is the primary provider of workforce preparation in Illinois.
-

---

## Facts About Community Colleges

- In fiscal year 2009, business and industry centers within Illinois community colleges served over 165,000 businesses and individuals.
- Nine out of ten Illinois community college graduates live, work, pay taxes, and raise their families in Illinois.
- Using two-way interactive video technology, the Illinois community college system has built multiple partnerships with postsecondary education institutions, with the K-12 schools, with rural hospitals, with federal research labs, with industry, with libraries, and with manufacturers.
- The Illinois community college system was one of the first in the nation to offer students educational guarantees and one of the first to develop a uniform financial reporting system.

*Information acquired from ICCB website:  
<http://www.iccb.org/facts.html>  
April 2010*

---

## College Programs/Classes

Illinois Central College offers 71 programs of study for the Associate in Arts and Science Degree, 79 programs of study for the Associate in Applied Science degree, and 93 Occupational Certificate programs. Approximately 3,300 classes are offered each fall and spring semester. The average class size is 14.

---

---

## Enrollment Trends

	<b>Year</b>	<b># Students</b>	<b># Credit Hours</b>
<i>Head count and credit hours reflect Fall Census Day enrollment figures.</i>	1999	11,145	92,089
	2000	11,053	91,370
	2001	11,083	93,318
	2002	11,468	98,050
	2003	11,567	101,725
	2004	12,046	105,627
	2005	12,402	107,279
	2006	12,145	106,844
	2007*	11,804	102,428
	2008	12,020	105,443
	2009	13,049	117,826
	2010	13,078	116,439
2011	12,286	107,640	

\*Courses no longer offered at State Correctional institutions.

---

## Student Profile

### Student Ethnicity

White, Non-Hispanic	75.8%
African American	11.6%
Hispanic	3.4%
Asian / Pacific Islander	1.6%
Alaskan / Native American	0.3%

### Other Student Facts

Female	57.2%
Average Student Age	25 years
Full Time Status	38.4%
Part Time Status	61.6%

---

## Roles and Responsibilities



---

## Election Process and Seating

*Student Trustee candidates must be in good standing, maintain a 2.0 GPA, be enrolled for six hours or more, and file a petition containing a minimum of fifty student signatures.*

Student Trustee candidates must be students in good standing with the institution, maintain a 2.0 cumulative grade point average at the time of election and throughout their tenure of office, and be regularly and continuously enrolled for six hours or more at Illinois Central College during the regular session. Candidates must file petitions containing fifty or more signatures of bona fide resident students at Illinois Central College as determined by registration records.

All campaign materials must be approved by the Manager of Student Activities. Candidates' electioneering material must not be within 100 feet of the polling place on the days of the election. Candidates may campaign verbally on the days of the election, although they may not campaign within 100 feet of the polls.

The campus-wide election for the student representative is conducted by the Manager of Student Activities. All bona fide registered students at Illinois Central college, full or part time, are eligible to vote in the election. The candidate receiving the largest number of votes in the election shall be declared the student representative or Student Trustee for the Board of Trustees of District No. 514 serving for a one year term. Loss of qualifications at any time will constitute a resignation, and the vacancy created shall be filled by appointment as provided in the Bylaws and Policies of the Board of Trustees of Illinois Central College.

---

## Representing the Students

*The Student Trustee is encouraged to consider the impact of any given issue on the student body as a whole.*

The Student Trustee is a student elected official to the Board of Trustees. The Student Trustee is responsible to represent the views and opinions of the overall student population. Various issues and topics will arise throughout the school year. The Student Trustee is encouraged to solicit as much feedback as possible regarding issues affecting the student body. Recognizing that this may not always be possible, the Student Trustee is encouraged to consider the impact of any given issue on the student body as a whole and occasionally special interest groups.

---

## Code of Conduct

The ICC community has established as its core values Learning, Community, Integrity, Responsibility, and Excellence. As a member of the ICC community, the Student Trustees is responsible for upholding and living by the core values. Trust and honesty are also the cornerstones of our college.

As the student member of the Board of Trustees, you are expected to conduct yourself in a manner suitable and representative of the position. The Student Trustee is entitled to the same rights and responsibilities of all students as outlined in the Student Handbook. The Student Trustee is also expected to conduct themselves appropriately within the academic community; thus, as the student representative of Illinois Central College you are obligated to the same general standards of conduct both on- and off-campus. Failure to conduct yourself to the established standards for students and the Board of Trustees may result in disciplinary action leading up to and including dismissal from the Board of Trustees.

---

## Vacancy

### STEP 1

In the event of a vacancy of the Student Trustee position on the Board of Trustees, the Dean of Student Services, in concert with the Office of Student Activities, will invite candidates to apply for the position. Any candidate from the original ballot will be invited to automatically be one of the finalists or consideration. Other candidates will be solicited from the various clubs, organizations, and student groups.

### STEP 2

Students interested in becoming a candidate must submit a letter of application indicating their academic background, goals, reasons for seeking the position, involvement activities, and strengths they bring to the position.

### STEP 3

A committee will be formed consisting of three students, one faculty/staff member of the College, and the Manager for Student Activities. The committee will review the letters of application to identify the top two to five candidates. The committee will then conduct interviews of the final candidates.

---

## Vacancy (continued)

### STEP 4

The committee will make a recommendation to the Dean for Student Services who will in turn make a recommendation to the President of the College. The President will make the final recommendation to the Board of Trustees.

---

## Board Meetings/Packets

*Information contained  
in Board Packets is  
confidential in nature.*

Board of Trustee meetings are scheduled for the third Thursday of every month at 3:00 p.m. in the Founders Room, room 211, unless otherwise indicated. All Board meetings are public and formal in nature; therefore, professional attitudes and attire are expected. The Student Trustee will receive a Board Packet prior to the meeting date. Reviewing the packet materials is important. Questions or concerns should be addressed to the Dean of Student Services prior to the Board meeting. The Student Trustee will schedule a regular meeting with the Dean prior to and following each Board meeting to address these issues. A sample Board meeting agenda is included in the appendix.

Occasionally Board meetings will include *Closed Sessions*. During Closed Sessions the Board members deal with issues pertaining to litigation, the purchase of land, contract negotiations, student conduct, and personnel issues. Discussions and minutes of Closed Session meetings are to be kept in strict confidence. Meetings typically last two to three hours.

---

## Board Meeting Attendance

Attendance at Board Meetings and the annual Board Retreat is an expectation for the Student Trustee. Extenuating circumstances may arise that prevent attendance. If this should occur, the Student Trustee should notify the Secretary, President, or the Dean of Student Services as early as possible.

---

## State Involvement

The Student Trustee is encouraged to be involved in statewide associations to become well versed in the issues and topics affecting post-secondary education. The Student Trustee will have an opportunity to become involved in the Illinois Community College Board Student Advisory Committee (ICCB SAC) as well as the Illinois Board of Higher Education Student Advisory Committee (IBHE SAC). Information regarding these two committees will be provided.

---

## Student Trustee Travel

*Pre-approval travel expenses will be paid by the College*

Arrangements for travel by the Student Trustee will be made through the Secretary to the Board of Trustees. Pre-approved travel expenses will be paid by the College.

### Conference and Meeting Policy (Travel)

Travel related expenses for business conducted on the College's behalf by the Board of Trustees and the President of ICC should be reimbursed consistent with the guidelines established for all ICC employees. Generally the policy states that the business related expenses would be reimbursed at a reasonable actual cost while the ICC official is on College business.

A travel reimbursement form or a Conference and Meeting Request form should be completed for each individual claiming reimbursement. The proper supporting documentation (receipts) should be attached to the form for expenditures claimed and then submitted to the Secretary of the Board of Trustees.

### Meal Lodging Allowance

The College will reimburse meals at reasonable actual cost while the official is on College business. Documentation (receipts) is encouraged for all expenditures, but **required** for individual items over \$25.00. The following points should be observed:

- To obtain reimbursement, each meal must be individually itemized.
- Group meals should include a list of all attendees and purpose of the expenditure.

---

## Student Trustee Travel (continued)

- Breakfast is reimbursable when an official has been away from his/her residence overnight or is required to leave for the travel destination at or before 7:00 a.m.
- Lunch may be reimbursable when the official is conducting business away from his/her workplace between 10:00 a.m. and 2:00 a.m.
- Dinner is payable when an official is required to be away from his/her residence overnight or is required to leave for the travel destination at or before 6:00 p.m.
- The College generally will not reimburse officials for entertainment or incidental expenses.
- Expenses incurred relating to spouses of ICC officials are not reimbursable unless approved in advance by the Board Chair.

### Travel Advances

In the event a travel advance is requested, prior approval by the Board Chair, or designee, is required. The amount of the request should represent, at maximum, a reasonable estimate of expected “out of pocket” business expenses for the pending travel. All properly supported and authorized advance requests will be processed by Accounts Payable within ten business days of receipt.

*Final accounting  
for travel advances  
should be submitted  
to the Board  
Secretary*

College officials requesting an advance or reimbursement for travel expenses must complete a Conference and Meeting Request form. **Final accounting for travel advances should be submitted to the Board Secretary or designee no later than five (5) working days after the trip.** Any travel advance not accounted for after five (5) days may prevent disbursement of additional travel funds.

---

## Appendix





**MEETING NOTICE AND AGENDA**

**Call Regular Meeting to Order—David LaHood, Board Chair**

**Pledge of Allegiance**

**Roll Call**

**Recognition: New Full-Time Faculty Members  
Award Winning Studio Students  
Cross Country Teams**

**Citizen Comments**

*Visiting groups or individuals wishing to be heard concerning matters which lie within the scope of the Board’s duties and responsibilities shall submit a written request indicating the topic or topics to be discussed prior to the public Board meeting. Presentations are limited to 10 minutes.*

1. Consent Agenda.....Roll Call

*Any one member may remove an item from the consent item simply by requesting the Chair to do so. Items removed will be discussed and voted upon individually immediately following passage of the Consent Agenda.*

- 1.1 Minutes of the Open Session of the Regular Meeting of the Board of Trustees on January 19, 2012, and Minutes of the Closed Session of the Regular Monthly Meeting of the Board of Trustees on January 19, 2012
- 1.2 Personnel Recommendations
- 1.3 Purchase Report
- 1.4 Finance Report
- 1.5 Approval of Bills

2. President’s Report—Dr. John Erwin

- 2.1 State Budget Updates
- 2.2 Organizational Alignment

3. Educational Foundation—Tim Elder, Committee Chair  
Robin Ballard, Foundation Executive Director and  
Chief Development Officer

**MEETING NOTICE AND AGENDA**

**Page 2**

**February 23, 2012**

4. Systems Reports

4.1 Teaching/Learning—Tim Elder, Committee Chair  
Dr. William Tammone, Vice President for  
Academic Affairs

4.2 Student Life—DeVon Deckert, Student Trustee

4.3 Student Services—Katherine Coyle, Committee Chair  
Guy Goodman, Dean of Student Services

a. Spring Census and Annual Enrollment Report

4.4 Finance—Sue Yoder, Committee Chair  
Bruce Budde, Treasurer and Vice President for Administration  
and Finance

a. Reappointment of the Auditors. . . . . Roll Call

Closed Session: To discuss the appointment, employment, compensation, discipline,  
performance, or dismissal of specific employees (Section 2(c)(1) of the Open Meetings  
Act) . . . . . Roll Call

Resume Open Session. . . . . Roll Call

4.5 Human Resources—James Polk, Committee Chair  
Pat Parsons, Executive Director of Human Resources

a. Approval of Tenure Recommendations. . . . . Roll Call

b. Motion to Deny Tenure . . . . . Roll Call

4.6 Marketing and Diversity—Dr. Robert Ehrich, Committee Chair  
Dr. Cheryl Fliege, Associate Vice President of  
Marketing and College Communications  
Dr. Rita Ali, Executive Director of Diversity

4.7 Facilities and Technology—Don Brennan, Committee Chair  
Bruce Budde, Treasurer and Vice President for  
Administration and Finance

a. Final Construction Compliance Forms. . . . . Roll Call

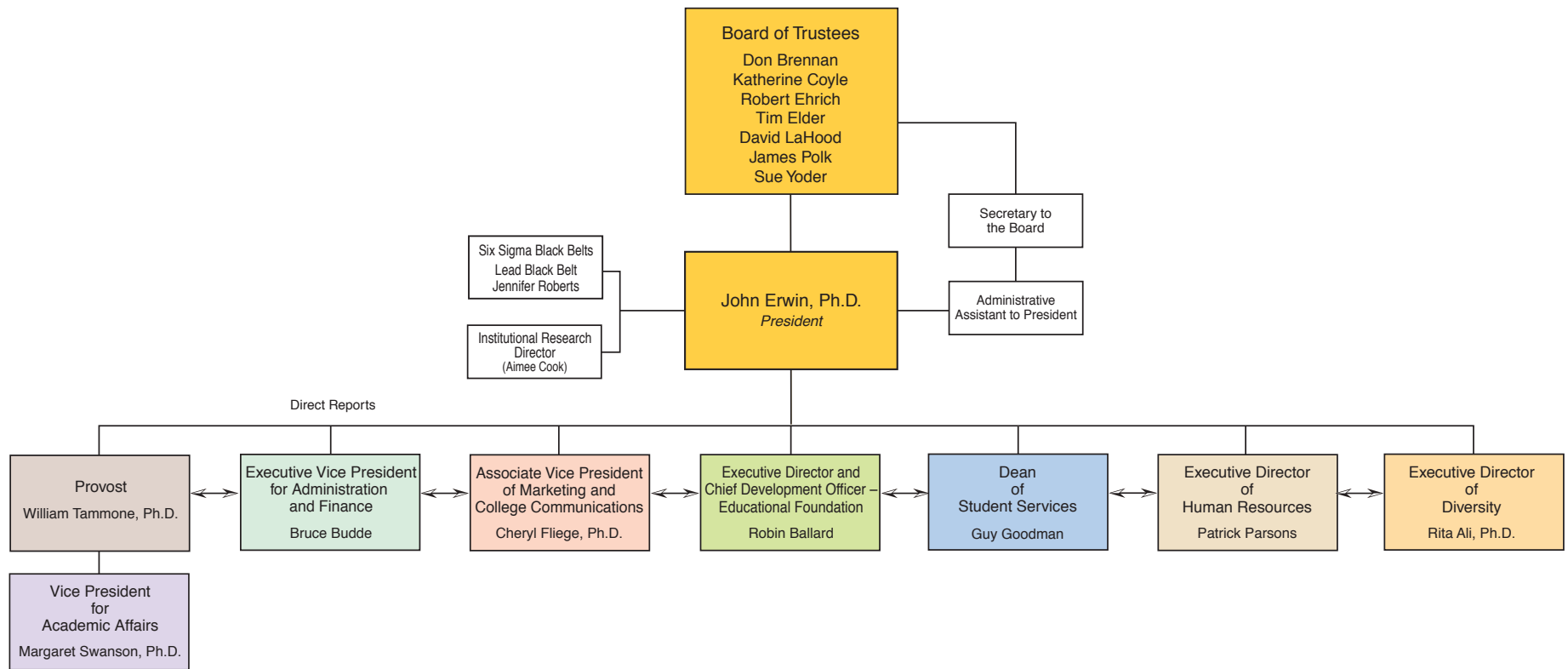
**MEETING NOTICE AND AGENDA**

**Page 3**

**February 23, 2012**

- 5. Committee of the Whole—David LaHood, Board Chair
- 6. Other Reports
  - 6.1 ICCTA Report—Don Brennan/James Polk
- 7. Unfinished Business
- 8. New Business
- 9. Announcements
- 10. Closed Session: To discuss pending or probable litigation against the College (Section 2(c)(11) of the Open Meetings Act); to discuss self-evaluation, practices and procedures, or professional ethics (Section 2(c)(16) of the Open Meetings Act); to discuss the purchase or lease of real property for the use of the public body, including the discussion whether a particular parcel should be acquired (Section 2(c)(5) of the Open Meetings Act); and to discuss the appointment, employment, compensation, discipline, performance, or dismissal of specific employees (Section 2(c)(1) of the Open Meetings Act) .....Roll Call
- 11. Adjournment ..... Motion

# ORGANIZATIONAL CHART – OVERVIEW



# Illinois Central College Essentials, Fall 2011

## Counties Served

ICC serves all or parts of 10 Central Illinois counties: Peoria, Tazewell, Woodford, Bureau, Logan, Marshall, Livingston, McLean, Stark, and Mason.

## Compared to Other Illinois Community College Districts

- 7<sup>th</sup> largest (2,322 square miles)
- 14<sup>th</sup> highest in assessed valuation (\$6.6 billion)
- 15<sup>th</sup> highest in operating tax rate (per \$100 of assessed value)
- 9<sup>th</sup> highest fall headcount (13,078 fall 2010, credit only)

## Accreditation

Illinois Central College is accredited by the Higher Learning Commission of the North Central Association of Colleges & Schools located at 30 North LaSalle, Suite 2400, Chicago, Illinois 60602-2504 (312-263-0485).

## Program and Class Information

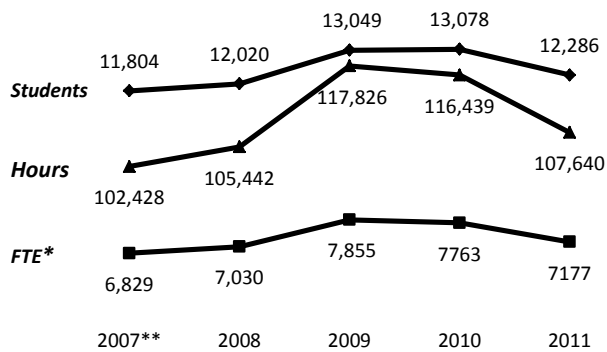
Associate, Arts & Science: 71 programs of study  
 Associate, Applied Science: 82 programs of study  
 Occupational Certificate: 97 certificates  
 About **3,000 classes** offered each fall and spring. Average class size is **16**.

## Illinois Central College District 514 Map



## Enrollment

### Fall Enrollment Trends (as of Census Day)



\*Full-time equivalency

\*\*Courses no longer offered at correctional facilities

### Fall Enrollment by Type of Degree/Certificate

	Fall 2009	Fall 2010	Fall 2011
Associate, Engineering Science	1.7%	1.8%	2.1%
Associate, General Education	18.0%	18.9%	18.0%
Associate, Applied Science	20.2%	20.5%	19.9%
Associate, Arts & Science	34.7%	35.1%	35.0%
Certificate	5.0%	4.1%	4.2%

### Fall 2011 Student Profile (as of Census Day)

#### Enrollment Status

Category	Percentage	Age Group	Percentage
Full-time	38.4%	16 and Under	3.5%
Part-time	61.6%	17-18	22.6%
		19-24	38.4%
		25-34	18.6%
		35-44	9.7%
		45-64	6.6%
		65 and Over	0.5%
		<b>Average Age</b>	25
		<b>Residency</b>	
		In-District	91.3%
		Foreign Students	1.0%

#### Gender

Male	42.8%
Female	57.2%

#### Race/Ethnicity

White	75.8%
Black/African American	11.6%
Hispanic (any race)	3.4%
Asian	1.6%
American Indian/Alaskan Native	0.3%
Native Hawaiian/Other Pacific Islander	0.1%
Two or More	3.0%
Unknown	4.3%

### District High School Graduates at ICC\*

	# of HS Graduates	Enrolled at ICC
FY 2008	4,219	31.4%
FY 2009	4,288	32.6%
FY 2010	4,188	39.7%
FY 2011	4,375	36.1%
FY 2012	4,375	32.3%

\*HS graduates who enrolled at ICC the fall after graduation

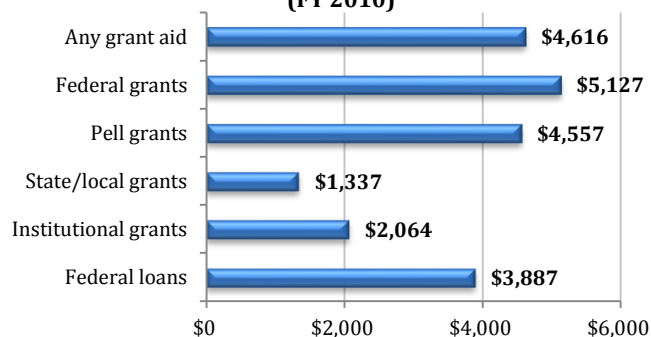
### Annual Enrollment (Unduplicated)

#### Number of Students

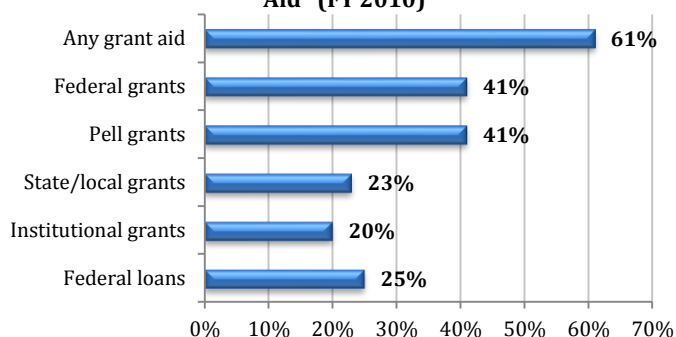
FY 2007	20,152
FY 2008	19,416
FY 2009	18,993
FY 2010	19,950
FY 2011	19,573

## Financial Aid

**Types and Average Amounts of Aid Received\* (FY 2010)**



**Percent of Students Receiving Aid by Type of Aid\* (FY 2010)**



\*Full-time, first-time, degree-seeking students

\*Full-time, first-time, degree-seeking students

## Graduates

**Graduates by Fiscal Year**

	Degrees	Certificates	Total
FY 2007	1,215	570	1,785
FY 2008	1,228	570	1,798
FY 2009	1,165	287	1,452
FY 2010	1,310	377	1,687
FY 2011	1,355	406	1,761

**Graduates by Type of Degree**

	FY 2009	FY 2010	FY 2011
Associate, Arts & Science	37.7%	36.6%	38.2%
Associate, Applied Science	31.3%	31.3%	29.7%
Associate, Engineering Science	1.2%	1.3%	0.9%
Associate, General Education	10.1%	8.4%	8.1%
Certificate	19.8%	22.3%	23.1%

**Students Transferring to Four-Year or Higher Institutions\***

Cohort	Total Transfers**	Transfers to Four-Year Institutions	Percent of Total	Transferred with Degree**
FY 2005	364	276	75.8%	142
FY 2006	341	266	78.0%	144
FY 2007	304	242	79.6%	124
FY 2008	334	252	75.4%	125
FY 2009	397	303	76.3%	153

**Top Five Transfer Institutions (Four-Year or Higher)  
Fiscal Year 2009 Student Cohort\***

	Percent of Transfers
Illinois State University	19.4%
Bradley University	12.3%
Western Illinois University	5.3%
Eureka College	4.5%
Southern Illinois University (Edwardsville)	4.3%

\*First-time, full-time, degree-seeking students

\*First-time, full-time, degree-seeking students

\*\*Includes two-year and four-year institutions

## Non-Credit Enrollment

	FY 2011
<b>Race/Ethnicity</b>	
White, Non-Hispanic	47.7%
Black, Non-Hispanic	4.0%
Hispanic	1.1%
Asian/Pacific Islander	1.3%
American Indian/Alaskan Native	0.3%
Other/Unknown	45.6%
<b>Gender</b>	
Male	42.1%
Female	50.0%
<b>Education</b>	
Associate degree or higher	8.4%

## Faculty and Staff

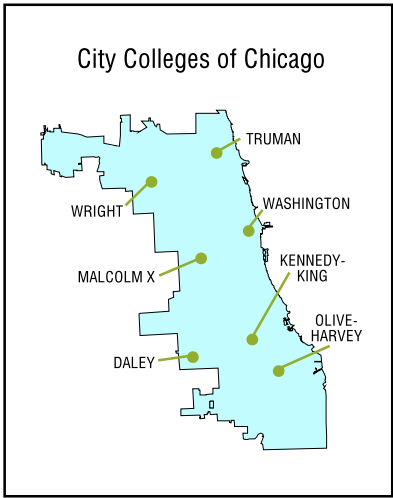
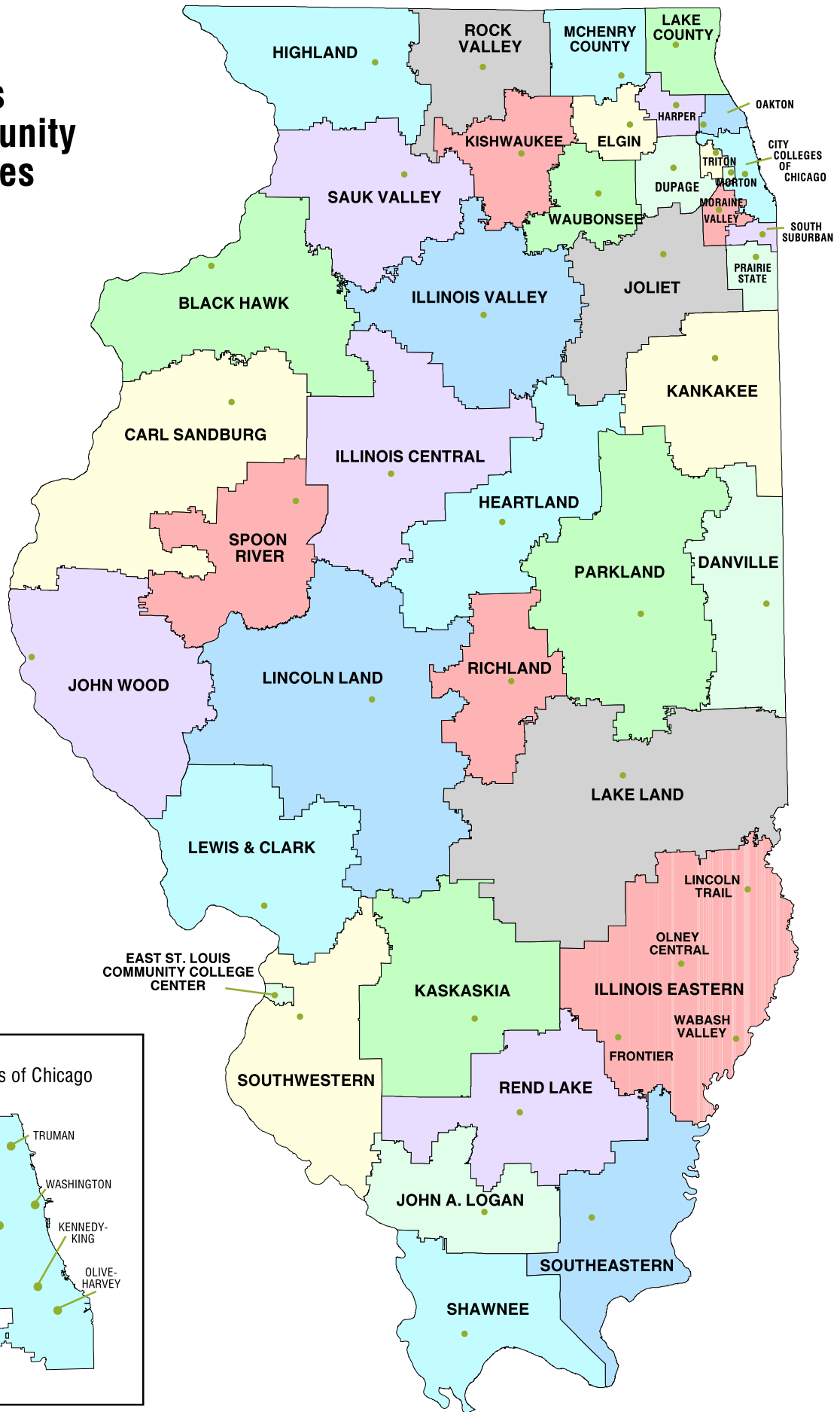
Fall 2011	Full-time	Part-time	Total
Faculty	192	466	658
Administration	29		29
Professional/Support	151	70	221
Classified	78	59	137
Custodial/Maintenance	82	74	156
<b>Total</b>	<b>532</b>	<b>669</b>	<b>1,201</b>

For more information, go to:

<http://www.icc.edu/insideIcc/institutionalResearch.asp>

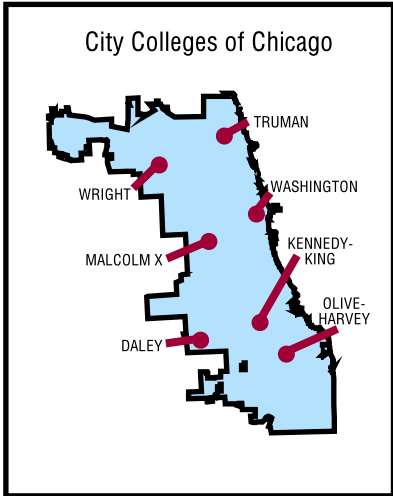
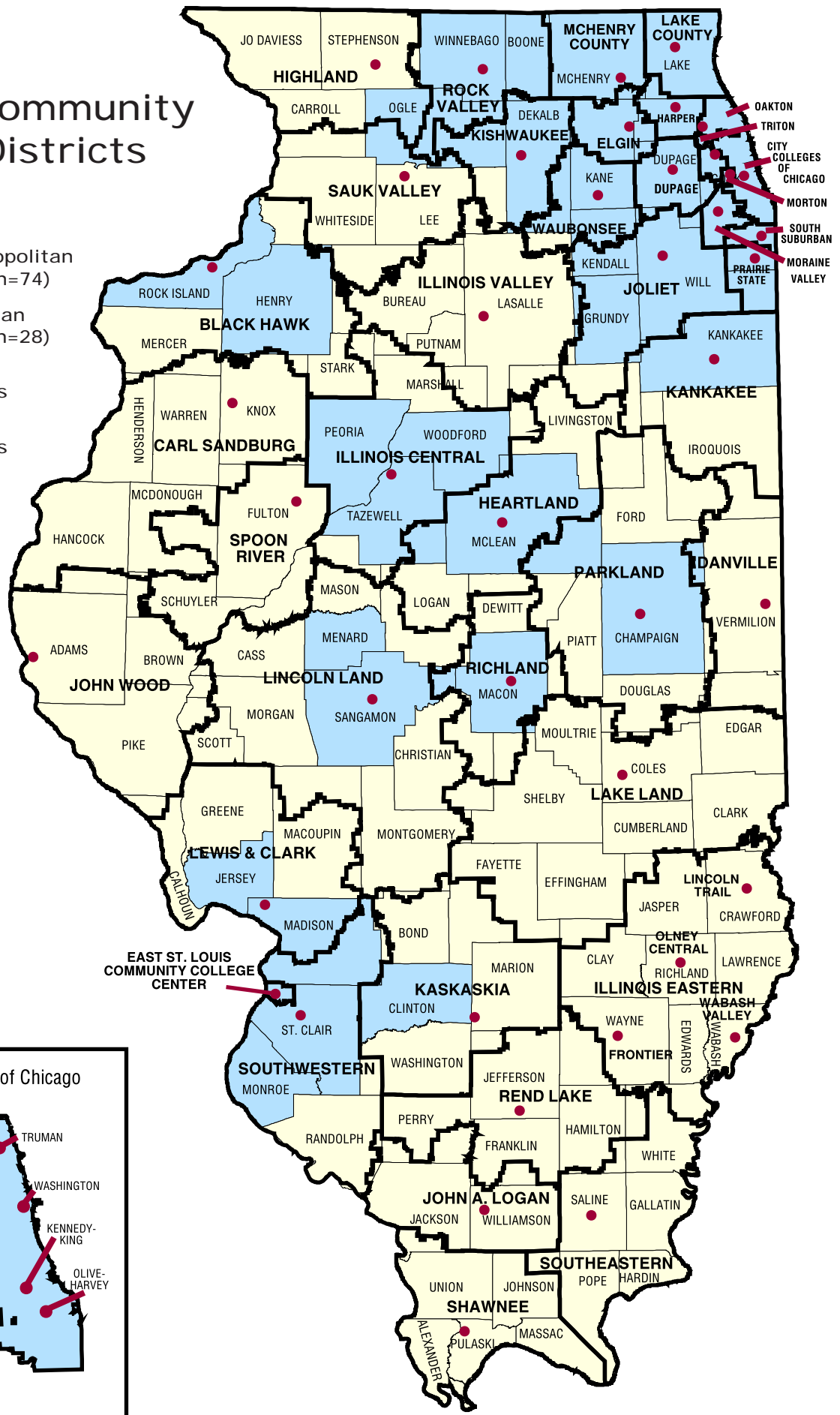


# Illinois Community Colleges

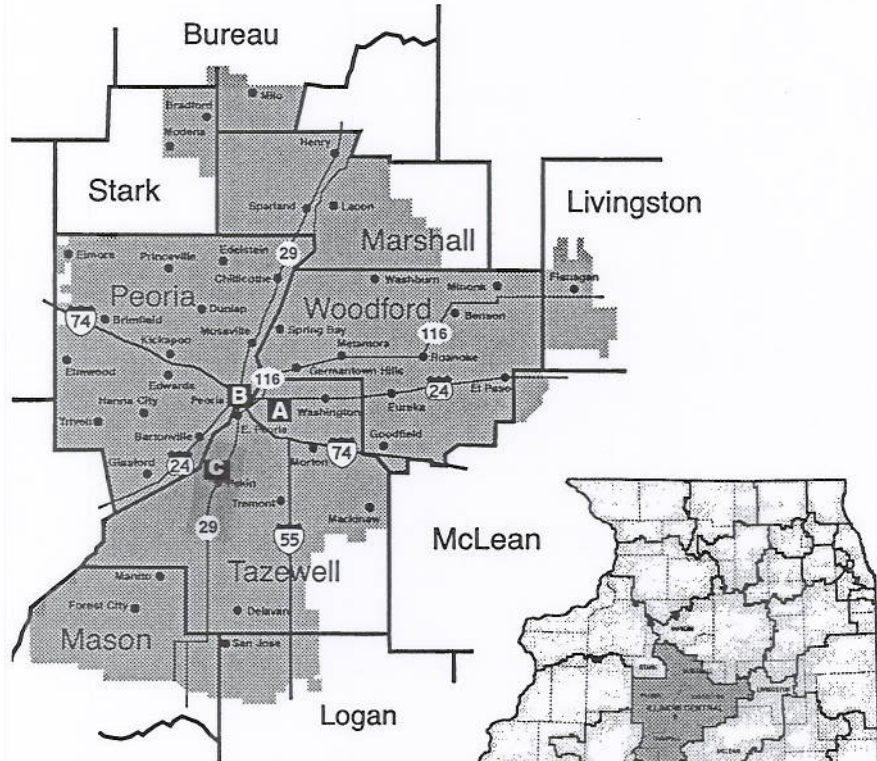


# Illinois Community College Districts

- Non-Metropolitan Counties (n=74)
- Metropolitan Counties (n=28)
- District Boundaries
- County Boundaries



# Illinois Central College #514 District Map



- A
**East Peoria Campus**  
 One College Drive
- B
**Downtown Peoria Campus**  
 Perley Building  
 115 SW Adams  
  
 Thomas Building  
 201 SW Adams  
  
**North Campus**  
 5407 N. University St.
- C
**Pekin South Campus**  
 225 Hanna Dr.

# Public Community Colleges in Illinois

Dr. Thomas B. Baynum

**Black Hawk College**

6600 34<sup>th</sup> Avenue  
Moline, IL 61265

Dr. Lori Sundberg

**Carl Sandburg College**

2400 Tom L. Wilson Boulevard  
Galesburg, IL 61401

Ms. Cheryl L. Hyman

**City Colleges of Chicago**

226 West Jackson Boulevard  
Chicago, IL 60606

Dr. José M. Aybar

**Daley College**

7500 S. Pulaski Road  
Chicago, IL 60652

Mr. Donald J. Laackman

**Harold Washington College**

30 East Lake Street  
Chicago, IL 60601

Dr. Joyce Ester

**Kennedy-King College**

6343 South Halsted  
Chicago, IL 60621

Dr. Anthony Munroe, Ed.D.

**Malcolm X College**

1900 West Van Buren Street  
Chicago, IL 60612

Dr. Craig T. Follins, Ph.D.

**Olive-Harvey College**

10001 South Woodlawn Avenue  
Chicago, IL 60628

Dr. Reagan Romali

**Truman College**

1145 West Wilson Avenue  
Chicago, IL 60640

Mr. Jim Palos

**Wilbur Wright College**

4300 North Narragansett Avenue  
Chicago, IL 60634

Dr. Robert Breuder

**College of DuPage**

425 Fawell Boulevard  
Glen Ellyn, IL 60137

Dr. Jerry Weber

**College of Lake County**

19351 West Washington Street  
Grayslake, IL 60030

Dr. Alice Marie Jacobs

**Danville Area Community College**

2000 East Main Street  
Danville, IL 68132

Dr. David Sam

**Elgin Community College**

1700 Spartan Drive  
Elgin, IL 60123

Dr. Allen Goben

**Heartland Community College**

1500 West Raab Road  
Normal, IL 61761

Dr. Joe M. Kanosky

**Highland Community College**

2998 West Pearl City Road  
Freeport, IL 61032

Mr. Terry L. Bruce

**Illinois Eastern Community Colleges**

233 East Chestnut Street  
Olney, IL 62450

Dr. Timothy L. Taylor

**Frontier Community College**

2 Frontier Drive  
Fairfield, IL 62837

Mr. Mitch Hannahs

**Lincoln Trail College**

11220 State Highway 1  
Robinson, IL 62454

Mr. Rodney Ranes

**Olney Central College**

305 North West Street  
Olney, IL 62450

Mr. Matt Fowler

**Wabash Valley College**

2200 College Drive  
Mt. Carmel, IL 62863

Dr. John S. Erwin

**Illinois Central College**

One College Drive  
East Peoria, IL 61635

Dr. Jerry Corcoran

**Illinois Valley Community College**

815 North Orlando Smith Road  
Oglesby, IL 61348

Dr. Robert L. Mees

**John A. Logan College**

700 Logan College Road  
Carterville, IL 62918

Dr. John Letts

**John Wood Community College**

1301 South 48<sup>th</sup> Street  
Quincy, IL 62305

Dr. Debra Daniels

**Joliet Junior College**

1215 Houbolt Road  
Joliet, IL 60431

Dr. John Avendano

**Kankakee Community College**

100 College Drive  
Kankakee, IL 60901

Dr. James C. Underwood

**Kaskaskia College**

27210 College Road  
Centralia, IL 62801

Dr. Thomas L. Choice

**Kishwaukee College**

21193 Malta Road  
Malta, IL 60150

Mr. Scott R. Lensink

**Lake Land College**

5001 Lake Land Boulevard  
Mattoon, IL 61938

Dr. Dale T. Chapman  
**Lewis & Clark Community College**  
5800 Godfrey Road  
Godfrey, IL 62035

Dr. Charlotte J. Warren  
**Lincoln Land Community College**  
5250 Shepherd Road, P.O. Box 19256  
Springfield, IL 62794

Dr. Vicky Smith  
**McHenry County College**  
8900 U.S. Highway 14  
Crystal Lake, IL 60012

Dr. Vernon O. Crawley  
**Moraine Valley Community College**  
9000 West College Parkway  
Palos Hills, IL 60465

Dr. Leslie A. Navarro  
**Morton College**  
3801 South Central Avenue  
Cicero, IL 60804

Dr. Margaret Lee  
**Oakton Community College**  
1600 East Golf Road  
Des Plaines, IL 60016

Dr. Thomas R. Ramage  
**Parkland College**  
2400 West Bradley Avenue  
Champaign, IL 61821

Dr. Eric T. Radtke  
**Prairie State College**  
202 South Halsted Street  
Chicago Heights, IL 60411

Mr. Charley Holstein  
**Rend Lake College**  
468 North Ken Gray Parkway  
Ina, IL 62846

Dr. Gayle Saunders  
**Richland Community College**  
One College Park  
Decatur, IL 62521

Dr. Jack Becherer  
**Rock Valley College**  
3301 North Mulford Road  
Rockford, IL 61114

Dr. George Mihel  
**Sauk Valley Community College**  
173 Illinois Route 2  
Dixon, IL 61021

Dr. Larry Peterson  
**Shawnee Community College**  
8364 Shawnee College Road  
Ullin, IL 62992

Mr. George Dammer  
**South Suburban College**  
15800 South State Street  
South Holland, IL 60473

Dr. Jonah Rice  
**Southeastern Illinois College**  
3575 College Road  
Harrisburg, IL 62946

Dr. Georgia Costello  
**Southwestern Illinois College**  
2500 Carlyle Avenue  
Belleville, IL 62221

Dr. Robert E. Ritschel  
**Spoon River College**  
23235 North County 22  
Canton, IL 61520

Dr. Patricia Granados  
**Triton College**  
2000 Fifth Avenue  
River Grove, IL 60171

Dr. Christine J. Sobek  
**Waubensee Community College**  
Route 47 at Waubensee Drive  
Sugar Grove, IL 60554

Dr. Kenneth L. Ender  
**William Rainey Harper College**  
1200 West Algonquin Road  
Palatine, IL 60067

## Illinois State Representatives

### DAVID R. LEITCH (R) 73<sup>rd</sup> District

Counties: Peoria, Woodford, Marshall

314 Capitol Building  
Springfield IL 62706  
217.782.8108  
217.557.3047 (FAX)

District Office:

5407 North University  
Arbor Hall, Suite B  
Peoria IL 61614  
309.690.7373  
309.690.7375 (FAX)

### DONALD L. MOFFITT (R) 74<sup>th</sup> District

Counties: Bureau, Stark

223-N Stratton Office Building  
Springfield IL 62706  
217.782.8032  
217.557.0179 (FAX)

District Office:

#5 Weinberg Arcade  
Galesburg IL 61401  
309.343.8000  
309.343.2683 (FAX)

### BILL MITCHELL (R) 87<sup>th</sup> District

Counties: Tazewell, McLean, Logan

634 Capitol Building  
Springfield IL 62706  
217.782.8163  
217.782.1139 (FAX)

District Office:

5130 Hickory Point Frontage Road  
Suite 100  
Decatur, IL 62526  
217.876.1968  
217.876.1973 FAX

### MICHAEL UNES (R) 91<sup>st</sup> District

Counties: Tazewell, Peoria

240A W Stratton Office Building  
Springfield IL 62706  
217.782.8152  
217.782.1275 (FAX)

District Offices:

19 S Capitol Street  
Pekin, IL 61554  
309.620-8631  
309.349-3046 (FAX)

### JEHAN GORDON (D) 92<sup>nd</sup> District

County: Peoria

200-8S Stratton Office Building  
Springfield IL 62706  
217.782.3186  
217.558.4552 (FAX)

District Office:

300 East War Memorial Drive  
Suite 303  
Peoria, IL 61614  
309.681.1992  
309.681.8572 (FAX)

### NORINE HAMMOND (R) 94<sup>th</sup> District

County: Mason

213-N Stratton Office Building  
Springfield IL 62706  
217.782.0416  
217.557.4530 (FAX)

District Office:

331 N. Lafayette Street  
Macomb IL 61455  
309.836.2707  
309.836.2231 (FAX)

### KEITH SOMMER (R) 106<sup>th</sup> District

Counties: Woodford, Tazewell, McLean, Livingston

216-N Stratton Office Building  
Springfield IL 62706  
217.782.0221  
217.557.1098 (FAX)

District Office:

121 W. Jefferson  
Morton IL 61550  
309.263.9242  
309.263.8187 (FAX)

## Illinois State Senators

### DARIN M. LAHOOD (R) 37<sup>th</sup> District

Counties: Bureau, Stark, Marshall, Woodford, Peoria  
M103F Capitol Building  
Springfield IL 62706  
217.782.1942  
217.782.9586 (FAX)

#### District Offices:

5415 North University, Suite 105  
Peoria IL 61614  
309.693.4921  
309.693.4923 (FAX)

4 Weinberg Arcade  
Galesburg IL 61401  
309.343.8176  
309.343.2683 (FAX)

400 North Main Street  
Princeton, IL 61536  
815.872.1964  
815.872.1965 (FAX)

### BILL BRADY (R) 44<sup>th</sup> District

Counties: Tazewell, McLean, Logan  
105A Capitol Building  
Springfield IL 62706  
217.782.6216  
217.782.8116 (FAX)

#### District Offices:

2203 Eastland Drive  
Suite 3  
Bloomington IL 61704  
309.664.4440  
309.664.8597 (FAX)

### DAVID KOEHLER (D) 46<sup>th</sup> District

Counties: Tazewell, Peoria  
311 B Capitol Building  
Springfield IL 62706  
217.782.8250  
217.782.3213 (FAX)

#### District Office:

13 South Capitol Street  
Pekin IL 61554  
309.346.4646  
309.346.4650 (FAX)

### JOHN M. SULLIVAN (D) 47<sup>th</sup> District

County: Mason  
417 Capitol Building  
Springfield, IL 62706  
217.782.2479  
217.782.2331 (FAX)

#### District Office:

926 Broadway Suite 6  
Quincy IL 62301  
217.222.2295  
217.222.2944 (FAX)

### SHANE CULTRA (R) 53<sup>rd</sup> District

Counties: Livingston, McLean, Woodford, Tazewell  
309C Capitol Building  
Springfield IL 62706  
217.782.6597  
217.782.3213 (FAX)

#### District Office:

104 W. Lincoln Avenue  
Onarga, IL 60955  
815.268.4090  
815.268.4363 (FAX)

### GOVERNOR PAT QUINN

Office of the Governor  
207 State House  
Springfield, IL 62706  
Phone: 217.782.0244.

James R. Thompson Center  
100 W. Randolph, 16-100  
Chicago, IL 60601  
Phone: 312.814.2121

---

## Acronyms / Websites

<b>AACC</b>	American Association of Community Colleges
<b>ACCT</b>	American Association of Community College Trustees
<b>ED</b>	Department of Education <a href="http://www.ed.gov">www.ed.gov</a>
<b>IBHE</b>	Illinois Board of Higher Education <a href="http://www.ibhe.state.il.us">www.ibhe.state.il.us</a>
<b>ICCB</b>	Illinois Community College Board <a href="http://www.iccb.org">www.iccb.org</a>
<b>ICCTA</b>	Illinois Community College Trustees Association <a href="http://www.communitycolleges.org">www.communitycolleges.org</a>
<b>IGA</b>	Illinois General Assembly
<b>ISAC</b>	Illinois Student Assistance Commission/College Zone <a href="http://www.collegezone.com">www.collegezone.com</a>
<b>ISBE</b>	Illinois State Board of Education <a href="http://www.isbe.net">www.isbe.net</a>
<b>NCES</b>	National Center for Education Statistics
<b>SAC</b>	Student Advisory Committee